



Multifunctional dynamic TFT exit sign luminaire made of sheet steel powder-coated. For indication of the safe escape route in variable directions and blocking of affected areas depending on the spread of smoke from a fire as well as display of various safety signs or customer-specific pictograms. With the TFT used, including backlight and image content monitoring, the pictograms are displayed in accordance with standards and can be easily exchanged.

### Technical data

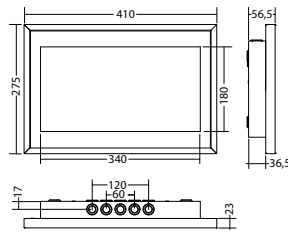
<b>viewing distance:</b>	35 m	<b>Nominal current DC:</b>	650 mA
<b>Material:</b>	sheet steel powder-coated	<b>Protection class:</b>	III
<b>Illuminant:</b>	TFT	<b>Input terminals:</b>	2.5mm <sup>2</sup> feed through wiring
<b>Nominal voltage DC:</b>	24 V ±20 %	<b>Temperature ta:</b>	-15...+40 °C

### Articles

FL 2835 TFT IDC 24V	
Colors	RAL 9016
Art. no.	101962962

wall mounting

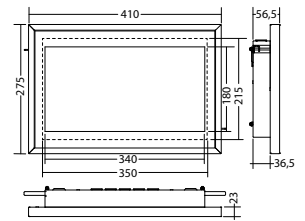
Protection category:  
IP40



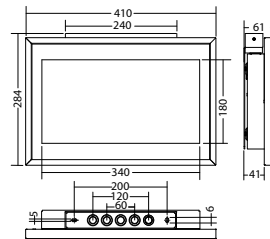
FL 2835 WE TFT IDC 24V	
Colors	RAL 9016
Art. no.	101963164

recessed wall mounting

Protection category:  
IP40



ceiling mounting-socketFL 2835 TFT,		Art. no. 893397
-------------------------------------	--	-----------------



Name	Accessories	Art. no.
Option card ES13 TFT-luminaire	optional	104212554
ceiling mounting-socketFL 2835 TFT,	optional	893397