



Single sided emergency exit luminaires made of robust, brushed stainless steel with high protection category. Homogeneous illumination by state-of-the-art LED technology with a luminance of $>500\text{cd/m}^2$. Suitable for use in food industry or food processing plants with high demands on product hygiene.

Technical data

viewing distance:	30 m
Rated duration:	1h;1,5h;2h;3h;8h
Battery type:	Ni-MH 4,8 V 1,1 Ah
Material:	stainless steel
Illuminant:	2 x 1W LED-module
Nominal voltage AC:	230V AC $\pm 10\%$ 50/60 Hz

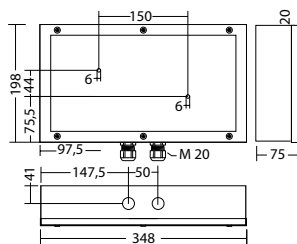
Nominal current AC:	33 mA
Apparent power:	7,5 VA
Inrush current:	11 A / 64 μs
Protection class:	I
Input terminals:	max. 2,5mm ² single-core
Temperature ta:	M: -5...+35 °C, NM: 0...+40 °C

Articles

BNP 808.1 SV/B LED 1-8/D	
Colors	stainless steel
Art. no.	101408244

wall mounting

Light colour: 6500 K

 Protection category:
IP65


Name	Accessories	Art. no.
Battery 4,8 V / 1,1 Ah, block	spare part	101428048
EB LED SV/B 1-8/D modul	spare part	101418045
Legend panel 808 / 828 PL	required	101212325
Legend panel 808 / 828 PL without logo	required	101216365
Legend panel 808 / 828 PLO without logo	required	101216870
Legend panel 808 / 828 PLU without logo	required	101216668
Legend panel 808 / 828 PO	required	101212628
Legend panel 808 / 828 PO without logo	required	101216163
Legend panel 808 / 828 PR	required	101212426
Legend panel 808 / 828 PR without logo	required	101216466
Legend panel 808 / 828 PRO without logo	required	101216769
Legend panel 808 / 828 PRU without logo	required	101216567
Legend panel 808 / 828 PU	required	101212527
Legend panel 808 / 828 PU without logo	required	101216264
Legend panel 808 / 828, makrolon	required	101223944
Piktogrammscheibe 808 / 828Sonder	required	101223742
structured cover 811	required	704073

Info: When ordering an exit luminaire, the required pictogram with the corresponding arrow direction must be indicated.

