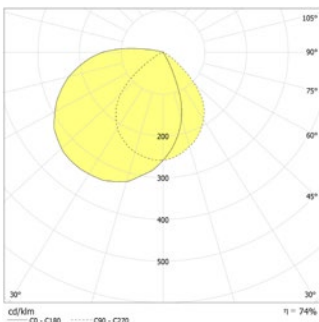


Trapezoidal LED safety luminaire for illumination of escape routes and exit doors. Luminaire for wall mounting with high protection category and elegant housing made of powder coated stainless steel without visible screws. Suitable for the usage in outdoor areas due to an outsourced supply unit.

External supply unit: IP66; Ta: -5...+40 °C

Technical data

Rated duration:	1h;1,5h;2h;3h;8h	Apparent power:	7,5 VA
Battery type:	Ni-MH 4,8 V 1,1 Ah	Inrush current:	11 A / 64 µs
Material:	stainless steel powder-coated	Protection class:	II
Illuminant:	3 x 1W LED-module	Input terminals:	max. 2,5mm ² single-core
Nominal voltage AC:	230V AC ±10% 50/60 Hz	Temperature ta:	-30...+40 °C
Nominal current AC:	33 mA		



Minimum illumination 1.0lx (area illumination),
Maintenance factor 0.8

	1.0m	2.0m	3.0m
1h ☀	65%		
1.0	1.8	4.3	
2.0	2.4	6.1	
3.0	2.5	7.0	
4.0	2.3	7.4	
5.0	1.5	7.1	
3h ☀	30%		
1.0	1.4	3.7	
2.0	1.7	4.8	
3.0	1.4	5.1	
8h ☀	15%		
1.0	1.0	3.0	
2.0	1.0	3.6	

Articles

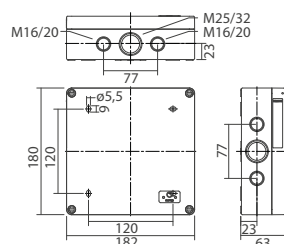
BN/V 6204.2 SV/B LED 1-8/D					
Colors	DB 703	HWF 9016	RAL 7015	RAL 9016	HWF (special) RAL (special)
Art. no.	101405315	102215667	101405214	101405113	101405012 101405416
wall mounting	Light colour: 6500 K		Protection category: IP65		



BN/V 6204.2 SV/B LED 1-8/D					
Colors	DB 703	HWF 9016	RAL 7015	RAL 9016	HWF (special) RAL (special)
Art. no.	101405315	102215667	101405214	101405113	101405012 101405416
wall mounting	Light colour: 6500 K		Protection category: IP65		



BN-supply AP SV/B LED - 1-8/DSKII IP66	Art. no. 102024091
---	--------------------



Name	Accessories	Art. no.
BN-supply AP SV/B LED - 1-8/DSKII IP66	required	102024091
mounting adapter SN 6204.2 IP65, RAL 7015	optional	100922840
mounting adapter SN 6204.2 IP65, RAL 9016	optional	100922739