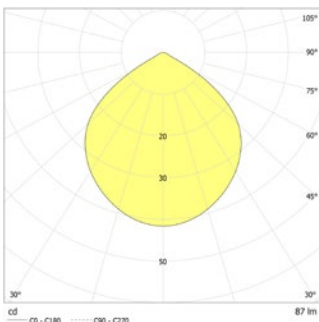


LED safety luminaire for illumination of escape routes and exit doors. Luminaire for wall mounting with high protection category and elegant housing made of powder coated aluminium without visible screws. Suitable for the usage in outdoor areas due to an outsourced supply unit. External supply unit: IP66; Ta: -5...+40 °C

Technical data

Rated duration:	1h;1,5h;2h;3h;8h	Apparent power:	5,9 VA
Battery type:	Ni-MH 4,8 V 1,1 Ah	Inrush current:	11 A / 64 µs
Material:	aluminium powder-coated	Protection class:	II
Illuminant:	1 x 1W LED-module	Input terminals:	max. 2,5mm ² single-core
Nominal voltage AC:	230V AC ±10% 50/60 Hz	Temperature ta:	-30...+40 °C
Nominal current AC:	26 mA		

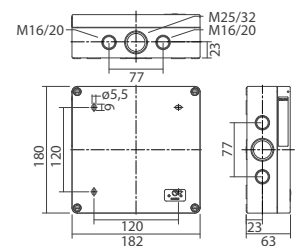


Ceiling mounting: Minimum illumination 1.0lx (middle of escape route), Maintenance factor 0.8

h (m)	1.0lx	1.5lx	2.0lx
1h	95%		
2.0	2.1	5.3	
3.0	2.4	6.7	
4.0	2.1	7.2	
5.0	1.3	6.9	
3h	60%		
2.0	1.8	4.7	
3.0	1.7	5.5	
4.0	0.6	5.3	
8h	30%		
2.0	1.0	3.6	
2.5	0.8	3.6	

Articles

BN/V 6206 -11 SV/B LED 1-8/D				
Colors	HWF 7015	RAL 7015	RAL 9016	HWF (special) RAL (special)
Art. no.	102377133	101405618	101405517	102433515 101405719
wall mounting	Light colour: 6500 K		Protection category: IP65	


BN-supply AP SV/B LED - 1-8/DSKII IP66 Art. no. 102024091


Name	Accessories	Art. no.
BN-supply AP SV/B LED - 1-8/DSKII IP66	required	102024091