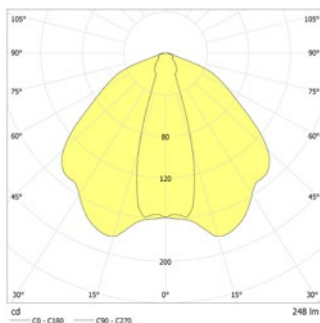


Robust LED safety luminaire with optimised light distribution for the illumination of escape routes with high mounting heights. Leuchte aus gebürstetem Edelstahl mit hoher Schutzart. Self-monitoring self-contained LED luminaires incl. high-quality high-temperature cells. Suitable for the usage in outdoor areas due to an outsourced supply unit. External supply unit: IP66; Ta: -5...+40 °C


Technical data

Rated duration:	1h;1,5h;2h;3h;8h	Inrush current:	11 A / 64 µs
Battery type:	Ni-MH 4,8 V 1,1 Ah	Protection class:	II
Material:	stainless steel	Input terminals:	max. 2,5mm ² single-core
Illuminant:	1 x 1,8W LED-module	Temperature ta:	-15...+40 °C
Nominal voltage AC:	230V AC ±10% 50/60 Hz	Impact resistance:	IK10

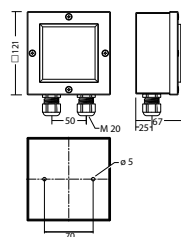


Ceiling mounting: Minimum illumination 1.0lx (middle of escape route), Maintenance factor 0.8

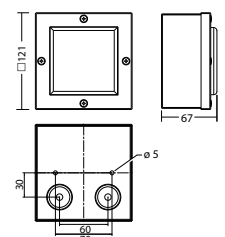
Beam angle (m)	1h	3h	8h
5.0	5.5	4.0	3.0
6.0	5.6	3.7	2.8
7.0	5.3	3.3	2.4
8.0	4.8	2.7	1.7
9.0	4.3	2.4	1.5
10.0	3.3	1.7	1.0

Articles

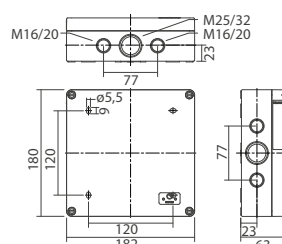
BN/V 804.2 AP -06 AHB SV/B LED 1-8/D				
Colors	stainless steel	RAL 9016	HWF (special)	RAL (special)
Art. no.	102067440	102046424	102046323	102046525
ceiling mounting for exposed wiring	Light colour: 4000 K		Protection category: IP65	



BN/V 804.2 D -06 AHB SV/B LED 1-8/D				
Colors	stainless steel	RAL 9016	HWF (special)	RAL (special)
Art. no.	102067137	102045515	102045414	102045616
ceiling mounting	Light colour: 4000 K		Protection category: IP65	



BN-supply AP SV/B LED - 1-8/DSKII IP66	Art. no. 102024091
--	--------------------



Name	Accessories	Art. no.
BN-supply AP SV/B LED - 1-8/DSKII IP66	required	102024091