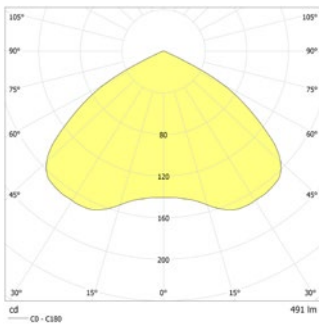


Robust LED safety luminaire with optimised light distribution for the illumination of areas. Leuchte aus gebürstetem Edelstahl mit hoher Schutzart. Self-monitoring self contained LED luminaires incl. high-quality high-temperature cells. Suitable for the usage in outdoor areas due to an outsourced supply unit.

External supply unit: IP66; Ta: -5...+40 °C


Technical data

Rated duration:	1h;1,5h;2h;3h;8h	Inrush current:	11 A / 64 µs
Battery type:	Ni-MH 4,8 V 1,1 Ah	Protection class:	II
Material:	stainless steel	Input terminals:	max. 2,5mm ² single-core
Illuminant:	1 x 3,5W LED-module	Temperature ta:	-15...+40 °C
Nominal voltage AC:	230V AC ±10% 50/60 Hz	Impact resistance:	IK10



Ceiling mounting: Minimum illumination 1.0lx (middle of escape route), Maintenance factor 0.8

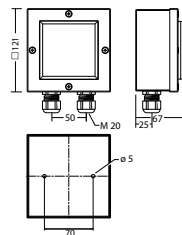
h (m)	1h	3h	8h
2.5	3.8	3.1	2.5
3.0	4.1	3.3	2.0
4.0	4.6	3.2	2.0
5.0	4.7	2.3	2.0
6.0	4.3	2.3	2.0
7.0	3.4	2.0	2.0

Minimum illumination 1.0lx (area illumination), Maintenance factor 0.8

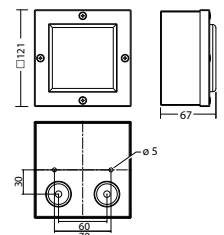
h (m)	1h	3h	8h
2.5	2.8	2.3	1.5
3.0	3.0	2.3	1.5
4.0	3.3	2.4	1.5
5.0	3.3	2.0	1.5
6.0	3.2	2.0	1.5
7.0	2.7	1.5	1.5

Articles

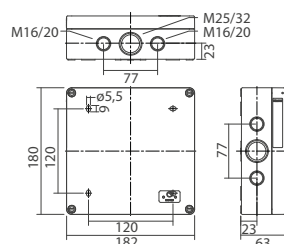
BN/V 804.2 AP -12 SHB SV/B LED 1-8/D				
Colors	stainless steel	RAL 9016	HWF (special)	RAL (special)
Art. no.	102067238	102045818	102045717	102045919
ceiling mounting for exposed wiring	Light colour: 4000 K		Protection category: IP65	



BN/V 804.2 D -12 SHB SV/B LED 1-8/D				
Colors	stainless steel	RAL 9016	HWF (special)	RAL (special)
Art. no.	102066935	102017930	102017829	102018031
ceiling mounting	Light colour: 4000 K		Protection category: IP65	



BN-supply AP SV/B LED - 1-8/DSKII IP66	Art. no. 102024091
--	--------------------



Name	Accessories	Art. no.
BN-supply AP SV/B LED - 1-8/DSKII IP66	required	102024091