



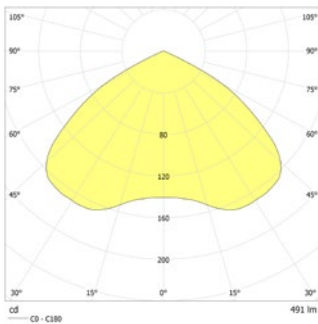
Robust LED safety luminaire with optimised light distribution for the illumination of areas. Leuchte aus gebürstetem Edelstahl mit hoher Schutzart. Self-monitoring self contained LED luminaires incl. high-quality high-temperature cells. Suitable for the usage in outdoor areas due to an outsourced supply unit.

External supply unit: IP66; Ta: -5...+40 °C

Technical data

Rated duration:	1h;1,5h;2h;3h;8h
Battery type:	Ni-MH 4,8 V 1,1 Ah
Material:	stainless steel
Illuminant:	1 x 3,5W LED-module
Nominal voltage AC:	230V AC ±10% 50/60 Hz

Inrush current:	11 A / 64 µs
Protection class:	II
Input terminals:	max. 2,5mm ² single-core
Temperature ta:	-15...+40 °C



Ceiling mounting: Minimum illumination 1.0lx (middle of escape route), Maintenance factor 0.8

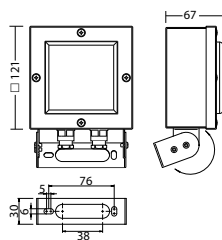
Beam diameter (m)	Beam diameter (ft)	Beam diameter (in)	Percentage
1h			50%
2.5	3.8	8.8	
3.0	4.1	9.8	
4.0	4.6	11.4	
5.0	4.7	12.5	
6.0	4.3	13.3	
7.0	3.4	13.4	
3h			25%
2.5	3.1	7.6	
3.0	3.3	8.3	
4.0	3.2	9.3	
5.0	2.3	9.5	
8h			10%
2.5	2.0	5.8	

Minimum illumination 1.0lx (area illumination), Maintenance factor 0.8

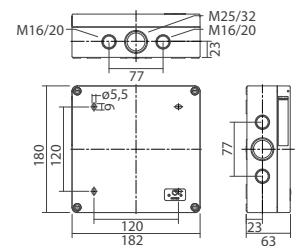
Beam diameter (m)	Beam diameter (ft)	Beam diameter (in)	Percentage
1h			50%
2.5	2.8	6.7	
3.0	3.0	7.7	
4.0	3.3	9.3	
5.0	3.3	10.6	
6.0	3.2	11.6	
7.0	2.7	12.3	
3h			25%
2.5	2.3	6.0	
3.0	2.3	6.0	
4.0	2.4	7.9	
5.0	2.0	8.7	
8h			10%
2.5	1.5	5.1	

Articles

BN/V 804.2 W -12 SHB SV/B LED 1-8/D		
Colors	stainless steel	HWF (special)
Art. no.	102067541	102046626
wall bracket mounting	Light colour: 4000 K	Protection category: IP65


BN-supply AP SV/B LED - 1-8/DSKII IP66 Art. no. 102024091

required



Name	Accessories	Art. no.
BN-supply AP SV/B LED - 1-8/DSKII IP66	required	102024091