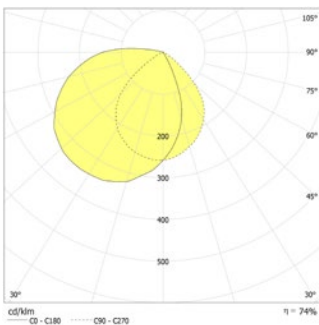




Trapezoidal LED emergency luminaires for illumination of escape routes and exit doors. Luminaires for wall mounting with elegant powder coated metal housing without any visible screws.

Technical data

Rated duration:	1h;1,5h;2h;3h;8h	Nominal current AC:	33 mA
Luminous flux:	1h = 65% ; 3h = 30% ; 8h = 15%	Apparent power:	7,5 VA
Battery type:	Ni-MH 4,8 V 1,1 Ah	Inrush current:	11 A / 64 µs
Material:	sheet steel powder-coated	Protection class:	I
Illuminant:	3 x 1W LED-module	Input terminals:	max. 2,5mm ² single-core
Nominal voltage AC:	230V AC ±10% 50/60 Hz	Temperature ta:	M: -5...+35 °C, NM: 0...+40 °C



Wall mounting: Minimum illumination 1.0lx

(at 1.0m distance), Maintenance factor 0.8

Duration	1.0m	1.8m	4.3m
1h (65%)	1.0	1.8	4.3
	2.0	2.4	6.1
	3.0	2.5	7.0
	4.0	2.3	7.4
	5.0	1.5	7.1
3h (30%)	1.0	1.4	3.7
	2.0	1.7	4.8
	3.0	1.4	5.1
8h (15%)	1.0	1.0	3.0
	2.0	1.0	3.6

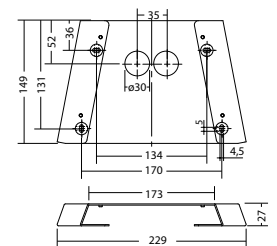
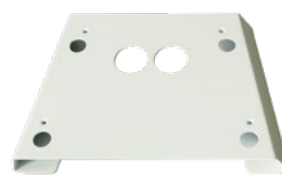
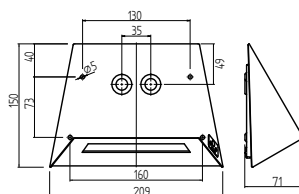
Articles

BN 6204 SV/B LED 1-8/D			
Colors	RAL 7015	RAL 9016	RAL (special)
Art. no.	101404810	100884444	101404911

mounting adapter BN 6204, RAL9016 Art. no. 101444014

wall mounting

Light colour: 6500 K

 Protection category:
IP40


Name	Accessories	Art. no.
Battery 4,8 V / 1,1 Ah, blocklong	spare part	101428250
EB LED SV/B 1-8/D modul	spare part	101418045
LM 122,5x21,5 3/6,5K KB90	spare part	101451791
mounting adapter BN 6204, RAL9016	optional	101444014