



Dynamic double-sided straight-line emergency exit sign luminaire made of high quality, powder-coated aluminium. Ideal to display the safe escape route depending on the smoke situation inside a building. For single-sided use, the current consumption is reduced by 50%.

**Technical data**

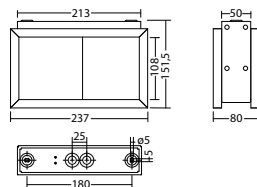
<b>viewing distance:</b>	20 m
<b>Material:</b>	aluminium powder-coated
<b>illuminant:</b>	LED-module
<b>Nominal voltage AC:</b>	230V ±10% 50/60 Hz
<b>Nominal voltage DC:</b>	176 - 264 V
<b>Nominal current AC:</b>	49 mA
<b>Nominal current DC:</b>	46 mA

<b>Apparent power:</b>	11,2 VA
<b>Effective power:</b>	10,6 W
<b>Inrush current:</b>	6 A / 22 µs
<b>Protection class:</b>	I
<b>Input terminals:</b>	2.5mm <sup>2</sup> feed through wiring
<b>Temperature ta:</b>	-15...+40 °C

**Articles**

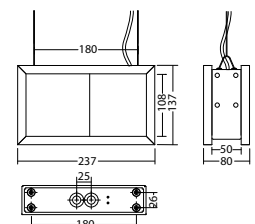
FL 1520 D/WA CLDD 230V		
Colors	RAL 9016	RAL (special)
Art. no.	101827869	101827970

wall or ceiling mounting

 Protection category:  
 IP40


FL 1520 S CLDD 230V		
Colors	RAL 9016	RAL (special)
Art. no.	101828273	101828374

cable suspension mounting

 Protection category:  
 IP40


Name	Accessories	Art. no.
AU FL 1520 CLDD 230V PR, RAL 9016	required	101836559
AU FL 1520 WA CLDD 230V PL, RAL 9016	required	101835953
AU FL 1520 WA CLDD 230V PR, RAL 9016	required	101836155
BG FL 1520 CLDD 230V PL RAL 9016	required	101836357
BG FL 1520 RAL 9016 Blindplatte	required	101444620

**Info:** When ordering a module luminaire, the required pictogram with the corresponding arrow direction and other equipment must be indicated.

PL:

PR:

