



Dynamic double-sided straight-line emergency exit sign luminaire made of high quality, powder-coated aluminium. Ideal to display the safe escape route depending on the smoke situation inside a building. For single-sided use, the current consumption is reduced by 50%.

Technical data

viewing distance:	20 m
Material:	aluminium powder-coated
illuminant:	LED-module
Nominal voltage AC:	230V ±10% 50/60 Hz
Nominal voltage DC:	176 - 264 V
Nominal current AC:	49 mA
Nominal current DC:	46 mA

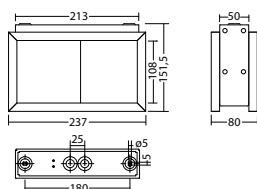
Apparent power:	11,2 VA
Effective power:	10,6 W
Inrush current:	6 A / 22 µs
Protection class:	I
Input terminals:	2.5mm ² feed through wiring
Temperature ta:	-15...+40 °C

Articles

FL 1520 D/WA FLDD 230V		
Colors	RAL 9016	RAL (special)
Art. no.	100874037	100874138

wall or ceiling mounting

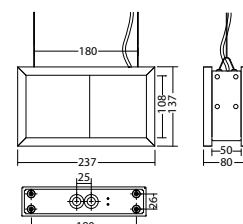
Protection category:
IP40



FL 1520 S FLDD 230V		
Colors	RAL 9016	RAL (special)
Art. no.	100874441	100874542

cable suspension mounting

Protection category:
IP40



Name	Accessories	Art. no.
AU FL 1520 FLDD 230V PL, RAL 9016	required	101485743
AU FL 1520 FLDD 230V PR, RAL 9016	required	101484228
AU FL 1520 WA FLDD 230V PL, RAL 9016	required	101484430
AU FL 1520 WA FLDD 230V PR, RAL 9016	required	101484632
AU blind plate FL 1520, RAL 9016	required	101444620

Info: When ordering a module luminaire, the required pictogram with the corresponding arrow direction and other equipment must be indicated.

