



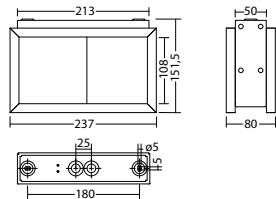
Dynamic double-sided straight-line emergency exit sign luminaire made of high quality, powder-coated aluminium. Ideal to display the safe escape route depending on the smoke situation inside a building. For single-sided use, the current consumption is reduced by 50%.

### Technical data

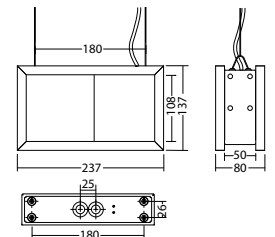
<b>viewing distance:</b>	20 m	<b>Nominal current DC:</b>	440 mA
<b>Material:</b>	aluminium powder-coated	<b>Protection class:</b>	III
<b>Illuminant:</b>	LED-module	<b>Input terminals:</b>	2.5mm <sup>2</sup> feed through wiring
<b>Nominal voltage DC:</b>	24 V ±25 %	<b>Temperature ta:</b>	-15...+40 °C

### Articles

FL 1520 D/WA ILDD 24V		
Colors	RAL 9016	RAL (special)
Art. no.	101395110	101395211
wall or ceiling mounting	Protection category: IP40	



FL 1520 S ILDD 24V		
Colors	RAL 9016	RAL (special)
Art. no.	101395514	101395615
cable suspension mounting	Protection category: IP40	



Name	Accessories	Art. no.
AU FL 1520 WA ILDD 24V PL, RAL9016	required	101485238
AU FL 1520 WA ILDD 24V PR, RAL9016	required	101485440
AU blind plate FL 1520, RAL 9016	required	101444620

**Info:** When ordering a module luminaire, the required pictogram with the corresponding arrow direction and other equipment must be indicated.

PL: PR:

