

**230V****FL 1520 PM/WE Straight-Line**

For connection to FUSION central battery- or emergency power (NEA) systems



Dynamic single-sided Straight-Line emergency exit sign luminaire made of high quality, powder-coated aluminium. Ideal to display the safe escape route depending on the smoke situation inside a building.

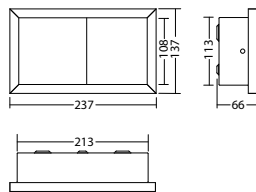
**Technical data**

<b>viewing distance:</b>	20 m	<b>Apparent power:</b>	5,6 VA
<b>Material:</b>	aluminium powder-coated	<b>Effective power:</b>	5,3 W
<b>Illuminant:</b>	LED-module	<b>Inrush current:</b>	6 A / 22 µs
<b>Nominal voltage AC:</b>	230V ±10% 50/60 Hz	<b>Protection class:</b>	I
<b>Nominal voltage DC:</b>	176 - 264 V	<b>Input terminals:</b>	2.5mm <sup>2</sup> feed through wiring
<b>Nominal current AC:</b>	24 mA	<b>Temperature ta:</b>	-15...+40 °C
<b>Nominal current DC:</b>	23 mA		

**Articles****FL 1520 PM FLDD 230V**

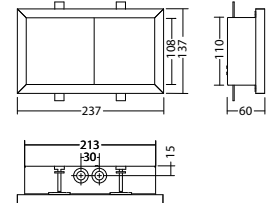
Colors	RAL 9016	RAL (special)
Art. no.	100874239	100874340

wall mounting

Protection category:  
IP40**FL 1520 WE FLDD 230V**

Colors	RAL 9016	RAL (special)
Art. no.	100874643	100874744

recessed wall mounting

Protection category:  
IP40

Name	Accessories	Art. no.
AU FL 1520 FLDD 230V PL, RAL 9016	required	101485743
AU FL 1520 FLDD 230V PR, RAL 9016	required	101484228

**Info:** When ordering a module luminaire, the required pictogram with the corresponding arrow direction and other equipment must be indicated.

PL:

PR:

