



FL 1530 D/WA/P Straight-Line

for connection to CP D.E.R. 230V



Dynamic double-sided straight-line emergency exit sign luminaire made of high quality, powder-coated aluminium. Ideal to display the safe escape route depending on the smoke situation inside a building. For single-sided use, the current consumption is reduced by 50%.

Technical data

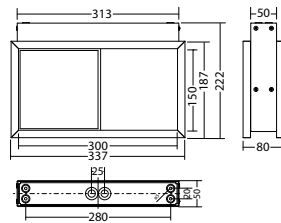
viewing distance:	30 m
Material:	aluminium powder-coated
illuminant:	LED-module
Nominal voltage AC:	230V ±10% 50/60 Hz
Nominal voltage DC:	176 - 264 V
Nominal current AC:	51 mA
Nominal current DC:	52 mA

Apparent power:	11,8 VA
Effective power:	11,2 W
Inrush current:	6 A / 22 µs
Protection class:	I
Input terminals:	2.5mm ² feed through wiring
Temperature ta:	-15...+40 °C

Articles

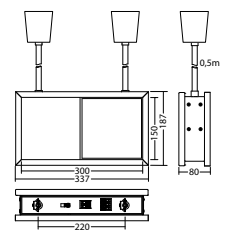
FL 1530 D/WA CLDD 230V		
Colors	RAL 9016	RAL (special)
Art. no.	101827061	101827162

wall or ceiling mounting



FL 1530 P CLDD 230V		
Colors	RAL 9016	RAL (special)
Art. no.	101827465	101827566

pendulum mounting



Name	Accessories	Art. no.
AU FL 1530 CLDD 230V PL, RAL 9016	required	101835347
AU FL 1530 WA CLDD 230V PL, RAL 9016	required	101835751
AU FL 1530 WA CLDD 230V PR, RAL 9016	required	101835549
AU blind plate FL 1530, RAL 9016	optional	100923143
BG Doppelbaldachin FL 1530, RAL 9016	101827465	102032579
BG FL 1530 CLDD 230V PR, RAL 9016	required	101835145
Pendulum SN-luminaire BUS 0,5mgr	required	101440879
Pendulum SN-luminaire BUS 0,5mwh	required	101440273
Pendulum SN-luminaire BUS 1,0mgr	required	101441081
Pendulum SN-luminaire BUS 1,0mwh	required	101440475
Pendulum SN-luminaire BUS 2,0mgr	required	101441283
Pendulum SN-luminaire BUS 2,0mwh	required	101440677

Info: When ordering a module luminaire, the required pictogram with the corresponding arrow direction and other equipment must be indicated.



Info: For luminaires with pendulum mounting, select the desired pendulum (length and colour of baldachin).