



Dynamic double-sided straight-line emergency exit sign luminaire made of high quality, powder-coated aluminium. Ideal to display the safe escape route depending on the smoke situation inside a building. For single-sided use, the current consumption is reduced by 50%.

Technical data

viewing distance:	30 m
Material:	aluminium powder-coated
illuminant:	LED-module
Nominal voltage AC:	230V ±10% 50/60 Hz
Nominal voltage DC:	176 - 264 V
Nominal current AC:	51 mA
Nominal current DC:	52 mA

Apparent power:	11,8 VA
Effective power:	11,2 W
Inrush current:	6 A / 22 µs
Protection class:	I
Input terminals:	2.5mm ² feed through wiring
Temperature ta:	-15...+40 °C

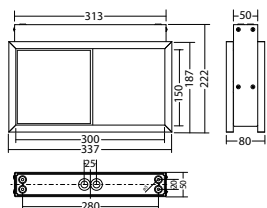
Articles

FL 1530 D/WA FLDD 230V

Colors	RAL 9016	RAL (special)
Art. no.	101385410	101385511

ceiling mounting

Protection category:
IP40

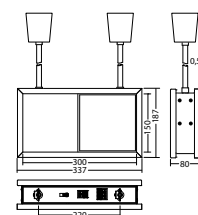


FL 1530 P FLDD 230V

Colors	RAL 9016	RAL (special)
Art. no.	101386420	101386521

pendulum mounting

Protection category:
IP40



Name	Accessories	Art. no.
AU FL 1530 FLDD 230V PL, RAL 9016	required	101483016
AU FL 1530 FLDD 230V PR, RAL 9016	required	101482814
AU FL 1530 WA FLDD 230V PL, RAL 9016	required	101483420
AU FL 1530 WA FLDD 230V PR, RAL 9016	required	101483218
AU blind plate FL 1530, RAL 9016	optional	100923143
BG Doppelbaldachin FL 1530, RAL 9016	optional	102032579
Pendulum set SN-luminaire 0,5m wh	required	101438960
Pendulum set SN-luminaire 1,0m wh	required	101439162
Pendulum set SN-luminaire 2,0m wh	required	101439364

Info: When ordering a module luminaire, the required pictogram with the corresponding arrow direction and other equipment must be indicated.



Info: For luminaires with pendulum mounting, select the desired pendulum (length and colour of baldachin).