



Multifunctional dynamic TFT exit sign luminaire made of UV- and glow wire resistant polycarbonate. For indication of the safe escape route in variable directions and blocking of affected areas depending on the spread of smoke from a fire as well as display of various safety signs or customer-specific pictograms. With the TFT used, including backlight and image content monitoring, the pictograms are displayed in accordance with standards and can be easily exchanged.

Technical data

viewing distance:	20 m
Material:	polycarbonate
Illuminant:	TFT
Nominal voltage AC:	230V ±10% 50/60 Hz
Nominal voltage DC:	176 - 264 V
Nominal current AC:	69 mA

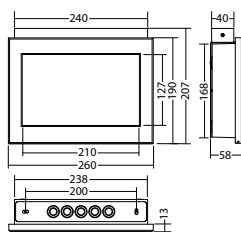
Nominal current DC:	40 mA
Apparent power:	15,8 VA
Effective power:	9,9 W
Protection class:	II
Input terminals:	2.5mm ² feed through wiring
Temperature ta:	-15...+40 °C

Articles

FL 2820 D TFT FDC 230V	
Colors	Polycarbonat
Art. no.	101396423

ceiling mounting

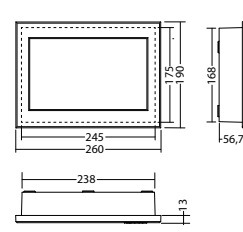
Protection category:
IP40



FL 2820 TFT FDC 230V	
Colors	Polycarbonat
Art. no.	101395918

recessed- and wall mounting

Protection category:
IP40



Name	Accessories	Art. no.
Option card ES13 TFT-luminaire	optional	104212554