



Multifunctional dynamic TFT exit sign luminaire made of sheet steel powder-coated. For indication of the safe escape route in variable directions and blocking of affected areas depending on the spread of smoke from a fire as well as display of various safety signs or customer-specific pictograms. With the TFT used, including backlight and image content monitoring, the pictograms are displayed in accordance with standards and can be easily exchanged.

Technical data

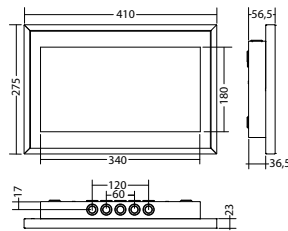
viewing distance:	35 m	Nominal current DC:	63 mA
Material:	sheet steel powder-coated	Apparent power:	26,4 VA
Illuminant:	TFT	Effective power:	14,3 W
Nominal voltage AC:	230V ±10% 50/60 Hz	Protection class:	I
Nominal voltage DC:	176 - 264 V	Input terminals:	2.5mm ² feed through wiring
Nominal current AC:	115 mA	Temperature ta:	-15...+40 °C

Articles

FL 2835 TFT FDC 230V		
Colors	RAL 9016	RAL (special)
Art. no.	101962861	105011893

wall mounting

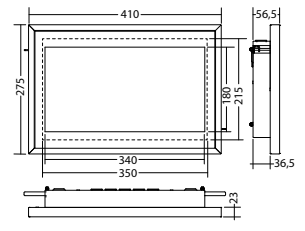
Protection category:
IP40



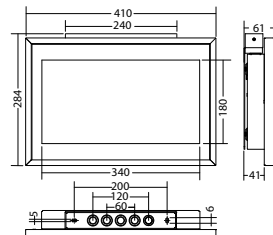
FL 2835 WE TFT FDC 230V	
Colors	RAL 9016
Art. no.	101963063

recessed wall mounting

Protection category:
IP40



ceiling mounting-socketFL 2835 TFT,		Art. no. 893397
-------------------------------------	--	-----------------



Name	Accessories	Art. no.
Option card ES13 TFT-luminaire	optional	104212554
ceiling mounting-socketFL 2835 TFT,	optional	893397