



Multifunctional dynamic TFT exit sign luminaire made of sheet steel powder-coated. For indication of the safe escape route in variable directions and blocking of affected areas depending on the spread of smoke from a fire as well as display of various safety signs or customer-specific pictograms. With the TFT used, including backlight and image content monitoring, the pictograms are displayed in accordance with standards and can be easily exchanged.

Technical data

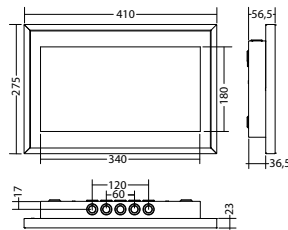
viewing distance:	35 m	Nominal current DC:	650 mA
Material:	sheet steel powder-coated	Protection class:	III
Illuminant:	TFT	Input terminals:	2.5mm ² feed through wiring
Nominal voltage DC:	24 V ±20 %	Temperature ta:	-15...+40 °C

Articles

FL 2835 TFT IDC 24V	
Colors	RAL 9016
Art. no.	101962962

wall mounting

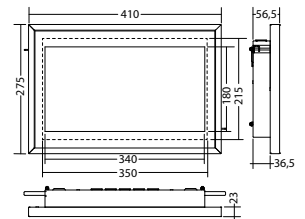
Protection category:
IP40



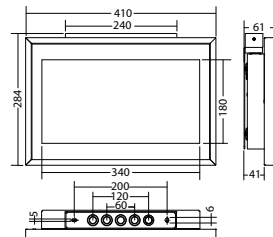
FL 2835 WE TFT IDC 24V	
Colors	RAL 9016
Art. no.	101963164

recessed wall mounting

Protection category:
IP40



ceiling mounting-socketFL 2835 TFT,	Art. no. 893397
-------------------------------------	-----------------



Name	Accessories	Art. no.
Option card ES13 TFT-luminaire	optional	104212554
ceiling mounting-socketFL 2835 TFT,	optional	893397