

230V**SNP 1520.1 Straight-Line**

For connection to FUSION central battery- or emergency power (NEA) systems



Straight-Line high quality emergency exit luminaires, made of powder coated aluminium profile of just 14.5mm thickness. Slim design and brilliant illumination by cutting-edge fibre optics technology with a luminance of $>500\text{cd/m}^2$.

Technical data

viewing distance:	20 m
Material:	aluminium powder-coated
illuminant:	12 x 0,1W LED-module
Nominal voltage AC:	230V \pm 10% 50/60 Hz
Nominal voltage DC:	176 - 264 V
Nominal current AC:	15 mA
Nominal current DC:	14 mA

Apparent power:	3,5 VA
Effective power:	3,0 W
Inrush current:	6 A / 22 μ s
Protection class:	I
Input terminals:	2.5mm ² feed through wiring
Temperature ta:	-15...+40 °C

Articles**SNP 1520.1 D/WA FLD 230V**

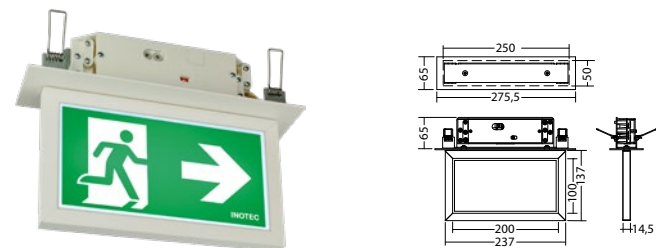
Colors	RAL 7015	RAL 9016	RAL (special)
Art. no.	101363683	101363582	101363784

wall bracket or ceiling mounting Light colour: 6500 K Protection category: IP40

**SNP 1520.1 E FLD 230V**

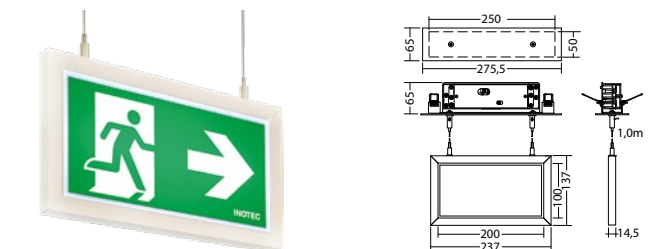
Colors	RAL 7015	RAL 9016	RAL (special)
Art. no.	101364592	101364491	101364693

recessed ceiling mounting Light colour: 6500 K Protection category: IP40

**SNP 1520.1 ES FLD 230V**

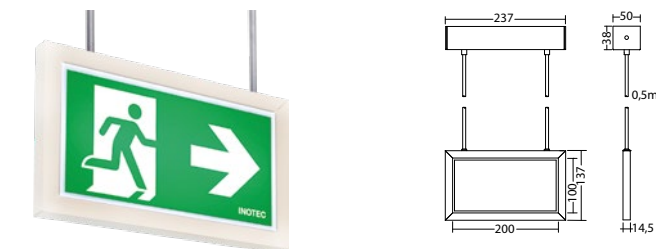
Colors	RAL 9016	RAL (special)
Art. no.	101364794	101364895

recessed cable suspension Light colour: 6500 K Protection category: IP40

**SNP 1520.1 P FLD 230V**

Colors	RAL 7015	RAL 9016	RAL (special)
Art. no.	101364289	101364188	101364390

pendulum mounting Light colour: 6500 K Protection category: IP40



230V

SNP 1520.1 Straight-Line

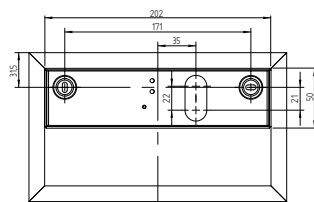


For connection to FUSION central battery- or emergency power (NEA) systems

SNP 1520.1 PM FLD 230V

Colors	RAL 7015	RAL 9016	RAL (special)
Art. no.	101363380	101363279	101363481

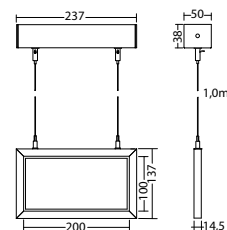
parallel wall mounting Light colour: 6500 K Protection category: IP40



SNP 1520.1 S FLD 230V

Colors	RAL 7015	RAL 9016	RAL (special)
Art. no.	101363986	101363885	101364087

cable suspension mounting Light colour: 6500 K Protection category: IP40



Name	Accessories	Art. no.
		undefined
Blind cover 1520	required	100680542
FLD 230/4 - CC - 320 - L	Ersatzteil	101965083
FLD 230/8 - CC - 320 - C	Ersatzteil	100903238
Legend panel 1520 PLO	required	101222530
Legend panel 1520 PRO	required	101222631
Legend panel SNP 1520 custom design	required	101224146
Legend panel for 1520 PL	required	100699235
Legend panel for 1520 PL - vertical	required	100699841
Legend panel for 1520 PL, without logo	required	101220712
Legend panel for 1520 PLU	required	101222126
Legend panel for 1520 PO	required	101222025
Legend panel for 1520 PO, w/ologo	required	101221924
Legend panel for 1520 PR	required	100699336
Legend panel for 1520 PR - vertical	required	100699942
Legend panel for 1520 PR, without logo	required	101220813
Legend panel for 1520 PRU	required	101222227
Legend panel for 1520 PU	required	100699437
Legend panel for 1520 PU - vertical	required	100700043
Legend panel for 1520 PU, without logo	required	101220914
Wireset 3m, SNP 101x,10x0,121x,15x0,72xx	optional	102384005
Wireset 5m, SNP 101x,10x0,121x,15x0,72xx	optional	102384106

Info: When ordering an exit luminaire, the required pictogram with the corresponding arrow direction must be indicated.

