

230V

SNP 7120-03 AS2 Aluminium luminaires

J/SV

For connection to JOKER-central battery systems



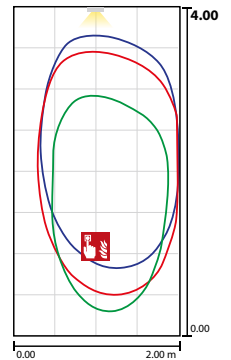
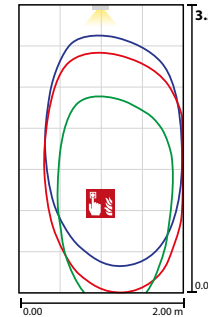
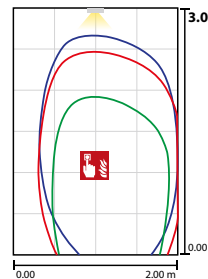
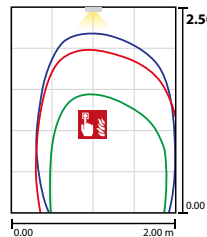
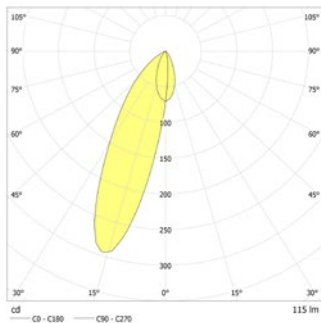
Single-sided exit sign luminaire made of high-quality aluminum profile. Especially flat design and an efficient and homogeneous illumination of the pictogram, using modern light guide technology. For easy and flexible installation, the cable entry is possible from the rear and from the side.

Incl. INOTEC Spot-Light 2 for illumination of highlighted areas.

**Technical data**

viewing distance:	20 m
Material:	aluminium
illuminant:	12 x 0,1W + 1 x 1W LED-module
Nominal voltage AC:	230V ±10% 50/60 Hz
Nominal voltage DC:	176 - 264 V
Nominal current AC:	21 mA
Nominal current DC:	17 mA

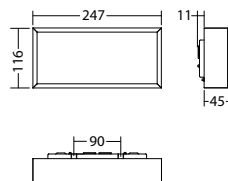
Apparent power:	4,9 VA
Effective power:	3,8 W
Inrush current:	6 A / 98 µs
Protection class:	I
Input terminals:	2.5mm ² feed through wiring
Temperature ta:	-15...+40 °C

**Articles**

SNP 7120 -03 AS2 LED J/SV	
Colors	Aluminium
Art. no.	102364100

wall mounting

Light colour: 6500 K

Protection category:
IP40

Name	Accessories	Art. no.
J-ET 5.1 SV-max. 24V DC320mA const.	Ersatzteil	101422893
Legend 7x20 em window with escape ladder	required	101950434
Legend panel 7x20 PL	required	101947404
Legend panel 7x20 PLO	required	101946996
Legend panel 7x20 PLU	required	101947101
Legend panel 7x20 PO	required	101947202
Legend panel 7x20 PR	required	101947303
Legend panel 7x20 PRO	required	101946895
Legend panel 7x20 PRU	required	101947000
Legend panel 7x20 PU	required	101947505
Legend panel 7x20 custom design	required	101870915
Legend panel 7x20 emergency window	required	101950636
Legend panel 7x20 fire extinguisher	required	102044909
Legend panel 7x20 rescue window	required	101950535

Info: When ordering an exit luminaire, the required pictogram with the corresponding arrow direction must be indicated.

