



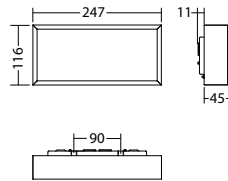
Single-sided exit sign luminaire made of high-quality aluminum profile. Especially flat design and an efficient and homogeneous illumination of the pictogram, using modern light guide technology. For easy and flexible installation, the cable entry is possible from the rear and from the side.

Technical data

viewing distance:	20 m	Nominal current DC:	70 mA
Material:	aluminium	Protection class:	III
Illuminant:	12 x 0,1W LED-module	Input terminals:	2.5mm ² feed through wiring
Nominal voltage DC:	24 V ±25 %	Temperature ta:	-15...+40 °C

Articles

SNP 7120 LED 24V		
Colors	Aluminium	
Art. no.	101959225	
wall mounting	Light colour: 6500 K	Protection category: IP40



Name	Accessories	Art. no.
Cover 7x86 / 7x20 opal		101203837
ILD 24/4-CC-320-C	Ersatzteil	101425321
Legend 7x20 em window with escape ladder		101950434
Legend panel 7x20 PL	required	101947404
Legend panel 7x20 PLO	required	101946996
Legend panel 7x20 PLU	required	101947101
Legend panel 7x20 PO	required	101947202
Legend panel 7x20 PR	required	101947303
Legend panel 7x20 PRO	required	101946895
Legend panel 7x20 PRU	required	101947000
Legend panel 7x20 PU	required	101947505
Legend panel 7x20 custom design		101870915
Legend panel 7x20 emergency window		101950636
Legend panel 7x20 fire extinguisher		102044909
Legend panel 7x20 rescue window		101950535
Spare part - LED unit SNP 7120	Ersatzteil	101969127

Info: When ordering an exit luminaire, the required pictogram with the corresponding arrow direction must be indicated.

PO: PR: PU: PL: PRO: PRU: PLU: PLO: