



Single sided emergency exit luminaires made of robust, brushed stainless steel with high protection category. Homogeneous illumination by state-of-the-art LED technology with a luminance of $>500\text{cd/m}^2$. Suitable for use in food industry or food processing plants with high demands on product hygiene.

Makrolon pictogram for high impact resistance IK10+ (50 joules) available as an option.



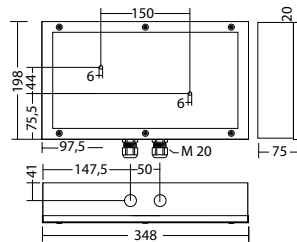
Technical data

viewing distance:	30 m
Material:	stainless steel brushed
illuminant:	2 x 1W LED-module
Nominal voltage DC:	24 V \pm 20 %
Nominal current DC:	115 mA

Protection class:	III
Input terminals:	2.5mm ² feed through wiring
Temperature ta:	-15...+40 °C
Impact resistance:	IK10

Articles

SNP 808 LED 24V						
Colors	stainless steel	HWF 7015	RAL 7015	RAL 9016	HWF 9016	HWF (special)
wall mounting			Light colour: 6500 K			Protection category: IP65



Name	Accessories	Art. no.
Legend panel 808 / 828 PL	required	101212325
Legend panel 808 / 828 PL without logo	required	101216365
Legend panel 808 / 828 PLO without logo	required	101216870
Legend panel 808 / 828 PLU without logo	required	101216668
Legend panel 808 / 828 PO	required	101212628
Legend panel 808 / 828 PO without logo	required	101216163
Legend panel 808 / 828 PR	required	101212426
Legend panel 808 / 828 PR without logo	required	101216466
Legend panel 808 / 828 PRO without logo	required	101216769
Legend panel 808 / 828 PRU without logo	required	101216567
Legend panel 808 / 828 PU	required	101212527
Legend panel 808 / 828 PU without logo	required	101216264
special legend panel 808	required	101223742

Info: When ordering an exit luminaire, the required pictogram with the corresponding arrow direction must be indicated.

