

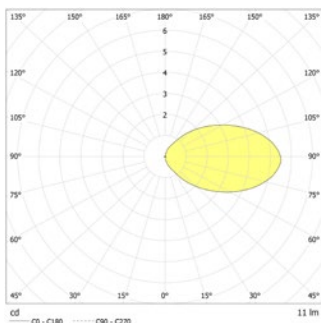


Rectangular LED safety luminaires to illuminate steps or escape routes. Recessed wall and stair mounting. Luminaire with powder-coated metal cover for installation in double wall box for concrete, cavity wall or in-wall.

Technical data

Material:	sheet steel powder-coated
Illuminant:	2 x 1W LED-module
Luminous flux:	11 lm
Nominal voltage AC:	230V ±10% 50/60 Hz
Nominal voltage DC:	176 - 264 V
Nominal current AC:	19 mA
Nominal current DC:	18 mA

Apparent power:	4,4 VA
Effective power:	4,0 W
Inrush current:	6 A / 22 µs
Protection class:	I
Input terminals:	2.5mm ² feed through wiring
Temperature ta:	-15...+40 °C



Articles

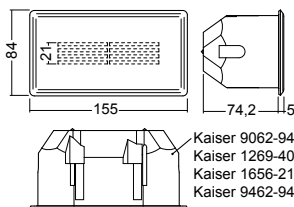
SN 6110 G FLD 230V rectangular, light output: grid

Colors	RAL 9006	RAL 9016	RAL (special)
Art. no.	101374292	101374191	101374393

recessed wall or stair mounting

Light colour: 6500 K

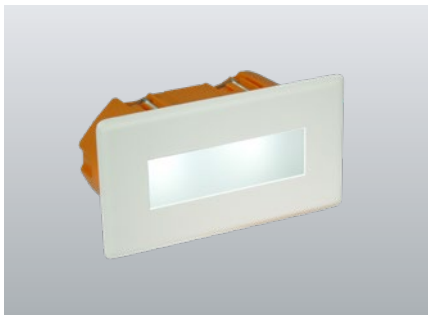
Protection category: IP20



Name	Accessories	Art. no.
FLD 230/8 – CC – 320 – C	Ersatzteil	100903238

230V**SN 6110 Wall, floor and stair luminaires**

For connection to FUSION central battery- or emergency power (NEA) systems

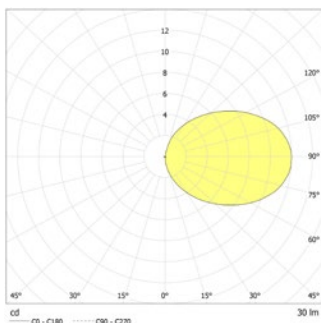


Rectangular LED safety luminaires to illuminate steps or escape routes. Recessed wall and stair mounting. Luminaire with powder-coated metal cover for installation in double wall box for concrete, cavity wall or in-wall.

Technical data

Material:	sheet steel powder-coated
Illuminant:	2 x 1W LED-module
Luminous flux:	30 lm
Nominal voltage AC:	230V ±10% 50/60 Hz
Nominal voltage DC:	176 - 264 V
Nominal current AC:	19 mA
Nominal current DC:	18 mA

Apparent power:	4,4 VA
Effective power:	4,0 W
Inrush current:	6 A / 22 μs
Protection class:	I
Input terminals:	2.5mm ² feed through wiring
Temperature ta:	-15...+40 °C

**Articles**

SN 6110 O FLD 230V rectangular, light output: opal			
Colors	RAL 9006	RAL 9016	RAL (special)
Art. no.	101373686	101373585	101373787

Name	Accessories	Art. no.
FLD 230/8 – CC – 320 – C	Ersatzteil	100903238

recessed wall or stair mounting Light colour: 6500 K Protection category: IP20

