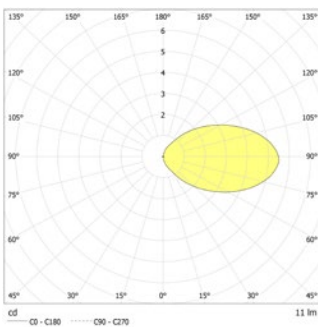




Rectangular LED safety luminaires to illuminate steps or escape routes. Recessed wall and stair mounting. Luminaire with powder-coated metal cover for installation in double wall box for concrete, cavity wall or in-wall.

Technical data

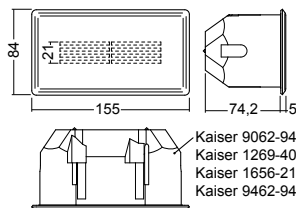
Material:	sheet steel powder-coated	Nominal current DC:	115 mA
Illuminant:	2 x 1W LED-module	Protection class:	III
Luminous flux:	11 lm	Input terminals:	2.5mm ² feed through wiring
Nominal voltage DC:	24 V ±20 %	Temperature ta:	-15...+40 °C

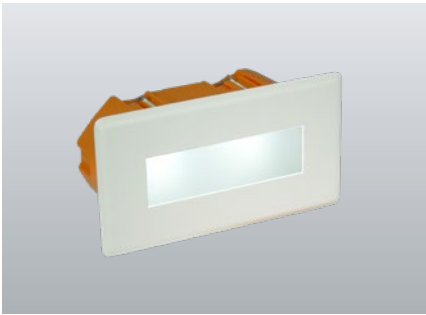


Articles

SN 6110 G LED 24V rectangular, light output: grid

Colors	RAL 9006	RAL 9016	RAL (special)
Art. no.	101333876	101333775	101333977
recessed wall or stair mounting	Light colour: 6500 K		Protection category: IP20

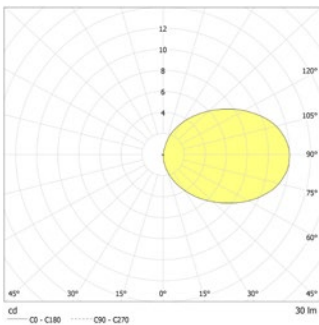




Rectangular LED safety luminaires to illuminate steps or escape routes. Recessed wall and stair mounting. Luminaire with powder-coated metal cover for installation in double wall box for concrete, cavity wall or in-wall.

Technical data

Material:	sheet steel powder-coated	Nominal current DC:	115 mA
Illuminant:	2 x 1W LED-module	Protection class:	III
Luminous flux:	30 lm	Input terminals:	2.5mm ² feed through wiring
Nominal voltage DC:	24 V ±20 %	Temperature ta:	-15...+40 °C



Articles

SN 6110 O LED 24V rectangular, light output: opal

Colors	RAL 9006	RAL 9016	RAL (special)
Art. no.	101333573	101333472	101333674
recessed wall or stair mounting	Light colour: 6500 K	Protection category: IP20	

