

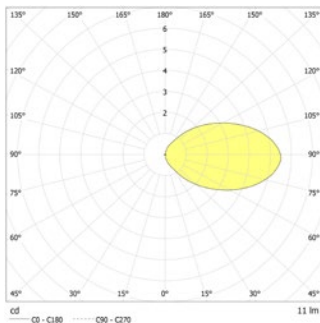


Rectangular LED safety luminaires to illuminate steps or escape routes. Recessed wall and stair mounting. Luminaire with powder-coated metal cover for installation in double wall box for concrete, cavity wall or in-wall.

### Technical data

<b>Material:</b>	sheet steel powder-coated
<b>Illuminant:</b>	2 x 1W LED-module
<b>Luminous flux:</b>	11 lm
<b>Nominal voltage AC:</b>	230V ±10% 50/60 Hz
<b>Nominal voltage DC:</b>	176 - 264 V
<b>Nominal current AC:</b>	27 mA
<b>Nominal current DC:</b>	18 mA

<b>Apparent power:</b>	6,1 VA
<b>Effective power:</b>	5,1 W
<b>Inrush current:</b>	8 A / 50 µs
<b>Protection class:</b>	I
<b>Input terminals:</b>	2.5mm <sup>2</sup> feed through wiring
<b>Temperature ta:</b>	-15...+40 °C



### Articles

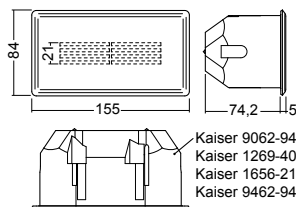
#### SN 6110 G LED J/SV rectangular, light output: grid

<b>Colors</b>	RAL 9006	RAL 9016	RAL (special)
<b>Art. no.</b>	101276080	101275979	101276181

recessed wall or stair mounting

Light colour: 6500 K

Protection category: IP20

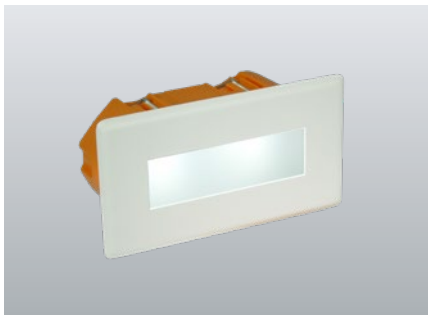


Kaiser 9062-94  
Kaiser 1269-40  
Kaiser 1656-21  
Kaiser 9462-94

Name	Accessories	Art. no.
2 REBEL 100LM KWS 95X21,5 KB90MM OPTIK L max. Strom 350 mA	Ersatzteil	095274
Austauschblende SN 6110 G,ws-str.	Ersatzteil	102031973
J - ET 9 / 24 SV -max.24VDC,320mAconst	Ersatzteil	101420267

**230V****SN 6110 Wall, floor and stair luminaires****J/SV**

For connection to JOKER-central battery systems

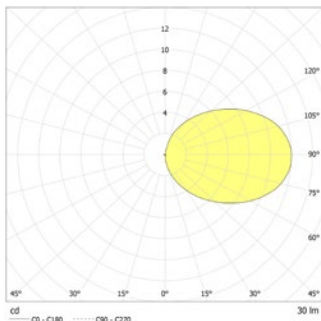


Rectangular LED safety luminaires to illuminate steps or escape routes. Recessed wall and stair mounting. Luminaire with powder-coated metal cover for installation in double wall box for concrete, cavity wall or in-wall.

**Technical data**

<b>Material:</b>	sheet steel powder-coated
<b>Illuminant:</b>	2 x 1W LED-module
<b>Luminous flux:</b>	30 lm
<b>Nominal voltage AC:</b>	230V ±10% 50/60 Hz
<b>Nominal voltage DC:</b>	176 - 264 V
<b>Nominal current AC:</b>	27 mA
<b>Nominal current DC:</b>	18 mA

<b>Apparent power:</b>	6,1 VA
<b>Effective power:</b>	5,1 W
<b>Inrush current:</b>	8 A / 50 µs
<b>Protection class:</b>	I
<b>Input terminals:</b>	2.5mm <sup>2</sup> feed through wiring
<b>Temperature ta:</b>	-15...+40 °C

**Articles****SN 6110 O LED J/SV rectangular, light output: opal**

<b>Colors</b>	RAL 9006	RAL 9016	RAL (special)
<b>Art. no.</b>	101275171	101275070	101275272

recessed wall or stair mounting

Light colour: 6500 K

Protection category: IP20

<b>Name</b>	<b>Accessories</b>	<b>Art. no.</b>
2 REBEL 100LM KWS 95X21,5 KB90MM OPTIK L max. Strom 350 mA	Ersatzteil	095274
Austauschblende SN 6110 O,ws.-str.	Ersatzteil	102032276
J - ET 9 / 24 SV -max.24VDC,320mAconst	Ersatzteil	101420267

