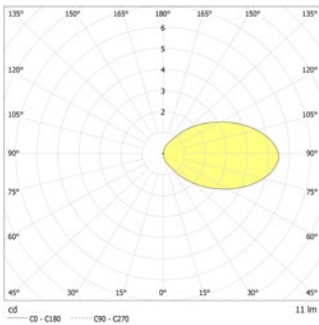




Rectangular LED safety luminaires to illuminate steps or escape routes. Recessed wall and stair mounting. Luminaire with powder-coated metal cover for installation in double wall box for concrete, cavity wall or in-wall.

Technical data

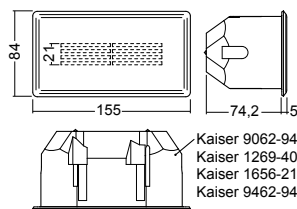
| | | | |
|----------------------------|----------------------------|--------------------------|--|
| Material: | sheet steel powder-coated | Effective power: | 5,1 W |
| Illuminant: | 2 x 1W LED-module | Inrush current: | 8 A / 50 μ s |
| Luminous flux: | 11 lm | Protection class: | I |
| Nominal voltage AC: | 230V AC \pm 10% 50/60 Hz | Input terminals: | 2.5mm ² feed through wiring |
| Nominal current AC: | 27 mA | Temperature ta: | -15...+40 °C |
| Apparent power: | 6,1 VA | | |



Articles

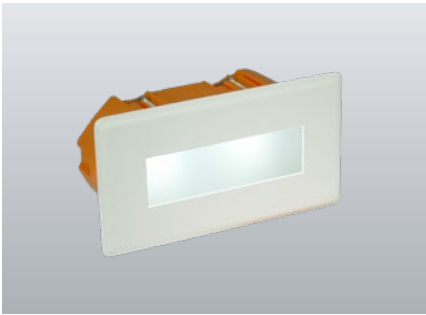
| SN 6110 G LED NE/SV rectangular, light output: grid | | | |
|---|----------------------|-----------|---------------------------|
| Colors | RAL 9006 | RAL 9016 | RAL (special) |
| Art. no. | 101276383 | 101276282 | 101276484 |
| recessed wall or stair mounting | Light colour: 6500 K | | Protection category: IP20 |

| Name | Accessories | Art. no. |
|--|-------------|-----------|
| 2 REBEL 100LM KWS 95X21,5 KB90MM OPTIK L max. Strom 350 mA | Ersatzteil | 095274 |
| Austauschblende SN 6110 G,ws-str. | Ersatzteil | 102031973 |
| NE - ET 9 / 24 SV -max.24VDC,320mAconst | Ersatzteil | 101420570 |



230V**SN 6110 Wall, floor and stair luminaires****NE/SV**

For connection to INOTEC-NEA-monitoring systems

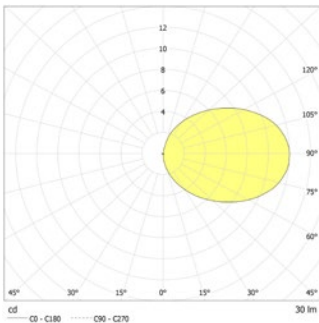


Rectangular LED safety luminaires to illuminate steps or escape routes. Recessed wall and stair mounting. Luminaire with powder-coated metal cover for installation in double wall box for concrete, cavity wall or in-wall.

Technical data

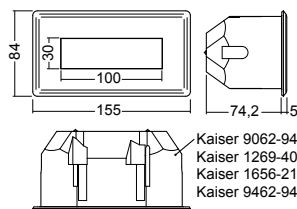
| | |
|----------------------------|----------------------------|
| Material: | sheet steel powder-coated |
| Illuminant: | 2 x 1W LED-module |
| Luminous flux: | 30 lm |
| Nominal voltage AC: | 230V AC \pm 10% 50/60 Hz |
| Nominal current AC: | 27 mA |
| Apparent power: | 6,1 VA |

| | |
|--------------------------|--|
| Effective power: | 5,1 W |
| Inrush current: | 8 A / 50 μ s |
| Protection class: | I |
| Input terminals: | 2.5mm ² feed through wiring |
| Temperature ta: | -15...+40 °C |

**Articles**

| SN 6110 O LED NE/SV rectangular, light output: opal | | | |
|--|----------------------|-----------|---------------------------|
| Colors | RAL 9006 | RAL 9016 | RAL (special) |
| Art. no. | 101275474 | 101275373 | 101275575 |
| recessed wall or stair mounting | Light colour: 6500 K | | Protection category: IP20 |

| Name | Accessories | Art. no. |
|--|--------------------|-----------------|
| 2 REBEL 100LM KWS 95X21,5 KB90MM OPTIK L max. Strom 350 mA | Ersatzteil | 095274 |
| Austauschblende SN 6110 O,ws.-str. | Ersatzteil | 102032276 |
| NE - ET 9 / 24 SV -max.24VDC,320mAconst | Ersatzteil | 101420570 |



Kaiser 9062-94
Kaiser 1269-40
Kaiser 1656-21
Kaiser 9462-94