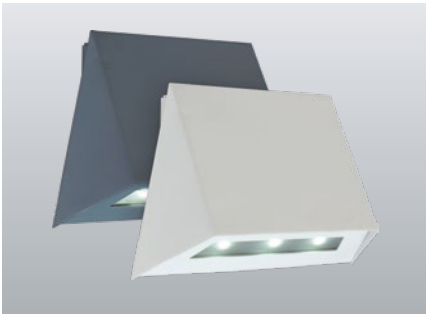


230V**SN 6204.1** Wall, floor and stair luminaires**NE/SV**

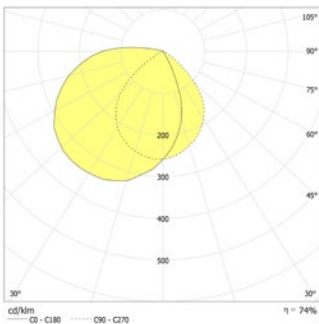
For connection to INOTEC-NEA-monitoring systems



Trapezoidal LED emergency luminaires for illumination of escape routes and exit doors. Luminaires for wall mounting with elegant powder coated metal housing without any visible screws.

Technical data

Material:	sheet steel powder-coated	Apparent power:	7,1 VA
Illuminant:	3 x 1W LED-module	Inrush current:	8 A / 50 µs
Luminous flux:	210 lm	Protection class:	I
Nominal voltage AC:	230V AC ±10% 50/60 Hz	Input terminals:	2.5mm ² feed through wiring
Nominal current AC:	31 mA	Temperature ta:	-15...+40 °C



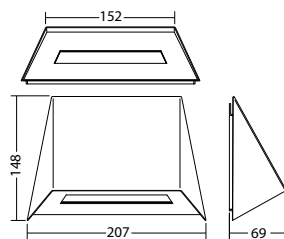
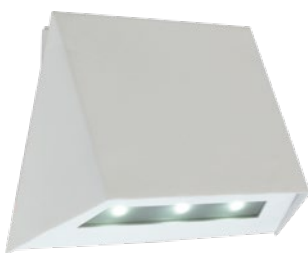
Wall mounting: Minimum illumination 1.0lx

Distance to middle of escape route	Distance to middle of escape route					
	1.0m	2.0m	3.0m	4.0m	5.0m	6.0m
1.0	2.2	5.4	2.3	5.7	1.8	5.2
2.0	2.8	7.0	2.8	7.2	2.3	6.8
2.5	3.0	7.4	3.0	7.8	2.6	7.4
3.0	3.1	8.0	3.1	8.4	2.7	8.1
3.5	3.2	8.5	3.2	8.7	2.8	8.5
4.0	3.1	8.7	3.1	9.1	2.8	8.8
4.5	3.0	9.0	3.0	9.3	2.7	9.0
5.0	2.8	9.0	2.8	9.3	2.5	9.1
5.5	2.6	9.0	2.6	9.3	2.0	9.1
6.0	2.2	8.8	2.1	9.2	1.5	8.9

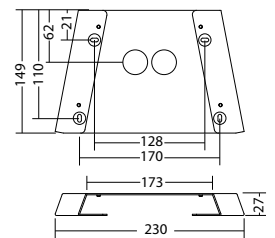
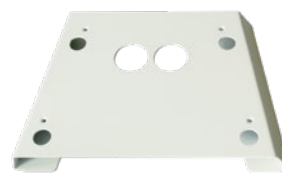
Articles**SN 6204.1 LED NE/SV**

Colors	RAL 7015	RAL 9016	RAL (special)
Art. no.	101284164	101284063	101284265

wall mounting Light colour: 6500 K Protection category: IP40

**mounting adapter SN 6204.1 IP40, RAL 9016**

Art. no. 101444317



Name	Accessories	Art. no.
LM 122,5x21,5 3/6,5K KB90	Ersatzteil	101451791
NE - ET 9 / 24 SV - max.24VDC,320mAconst	Ersatzteil	101420570
mounting adapter SN 6204.1 IP40, RAL 9016	optional	101444317