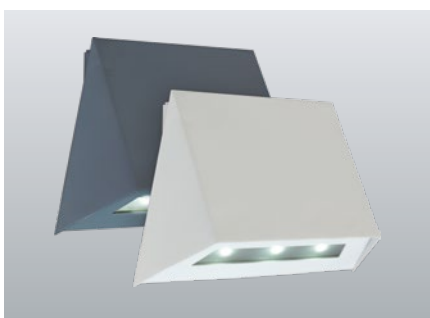


230V SN 6204.2 Wall, floor and stair luminaires

FLD For connection to FUSION central battery- or emergency power (NEA) systems

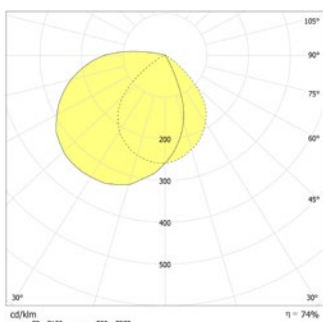


Trapezoidal LED safety luminaire for illumination of escape routes and exit doors. Luminaire for wall mounting with high protection category and elegant housing made of powder coated stainless steel without visible screws.

Technical data

Material:	stainless steel powder-coated
Illuminant:	3 x 1W LED-module
Luminous flux:	210 lm
Nominal voltage AC:	230V ±10% 50/60 Hz
Nominal voltage DC:	176 - 264 V
Nominal current AC:	23 mA
Nominal current DC:	22 mA

Apparent power:	5,2 VA
Effective power:	4,9 W
Inrush current:	6 A / 22 µs
Protection class:	I
Input terminals:	2.5mm ² feed through wiring
Temperature ta:	-15...+40 °C



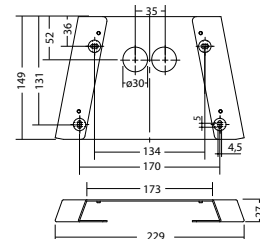
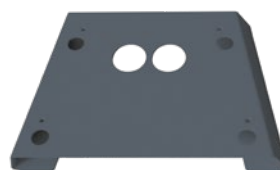
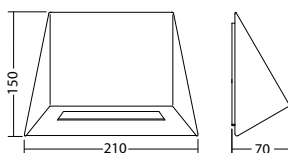
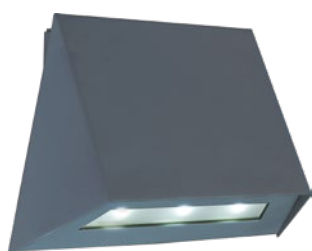
Wall mounting: Minimum illumination 1.0lx

[m]	Distance to middle of escape route					
	1.0m		2.0m		3.0m	
1.0	2.2	5.4	2.3	5.7	1.8	5.2
2.0	2.8	7.0	2.8	7.2	2.3	6.8
2.5	3.0	7.4	3.0	7.8	2.6	7.4
3.0	3.1	8.0	3.1	8.4	2.7	8.1
3.5	3.2	8.5	3.2	8.7	2.8	8.5
4.0	3.1	8.7	3.1	9.1	2.8	8.8
4.5	3.0	9.0	3.0	9.3	2.7	9.0
5.0	2.8	9.0	2.8	9.3	2.5	9.1
5.5	2.6	9.0	2.6	9.3	2.0	9.1
6.0	2.2	8.8	2.1	9.2	1.5	8.9

Articles

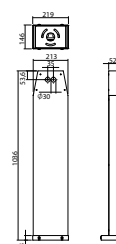
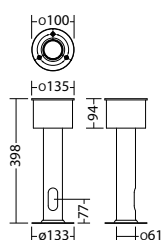
SN 6204.2 FLD 230V						
Colors	HWF 7015	RAL 7015	RAL 9016	HWF 9016	HWF (special)	RAL (special)
Art. no.	101833428	101372474	101372373	101372171	101372272	101372575
wall mounting	Light colour: 6500 K			Protection category: IP65		

mounting adapter SN 6204.2 IP65, RAL 7015 Art. no. 100922840



ground element bollard console Art. no. 101080565

bollard console SN 6204 LED, RAL 7015 Art. no. 101441889



Name	Accessories	Art. no.
FLD 230/8 – CC – 320 – C	Ersatzteil	100903238
LM 122,5x21,5 3/6,5K KB90	Ersatzteil	101451791
bollard console SN 6204 LED, RAL 7015	optional	101441889
ground element bollard console	optional	101080565
mounting adapter SN 6204.2 IP65, RAL 7015	optional	100922840