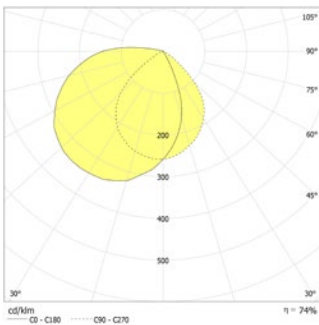


Trapezoidal LED safety luminaire for illumination of escape routes and exit doors. Luminaire for wall mounting with high protection category and elegant housing made of powder coated stainless steel without visible screws.

Technical data

Material:	stainless steel powder-coated	Nominal current DC:	150 mA
Illuminant:	3 x 1W LED-module	Protection class:	III
Luminous flux:	210 lm	Input terminals:	2.5mm ² feed through wiring
Nominal voltage DC:	24 V ±20 %	Temperature ta:	-15...+40 °C



Wall mounting: Minimum illumination 1.0lx

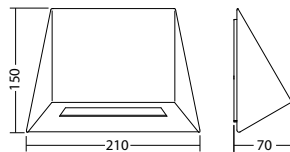
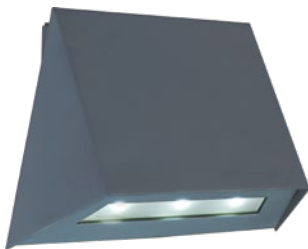
Distance to middle of escape route	Distance to middle of escape route					
	1.0m		2.0m		3.0m	
1.0	2.2	5.4	2.3	5.7	1.8	5.2
2.0	2.8	7.0	2.8	7.2	2.3	6.8
2.5	3.0	7.4	3.0	7.8	2.6	7.4
3.0	3.1	8.0	3.1	8.4	2.7	8.1
3.5	3.2	8.5	3.2	8.7	2.8	8.5
4.0	3.1	8.7	3.1	9.1	2.8	8.8
4.5	3.0	9.0	3.0	9.3	2.7	9.0
5.0	2.8	9.0	2.8	9.3	2.5	9.1
5.5	2.6	9.0	2.6	9.3	2.0	9.1
6.0	2.2	8.8	2.1	9.2	1.5	8.9

Articles

SN 6204.2 LED 24V

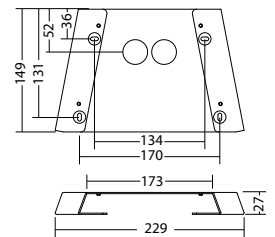
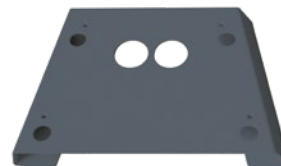
Colors	HWF 7015	RAL 7015	RAL 9016	HWF 9016	HWF (special)	RAL (special)
Art. no.	101832721	101337213	101337011	100816544	101336910	101337516

wall mounting Light colour: 6500 K Protection category: IP65



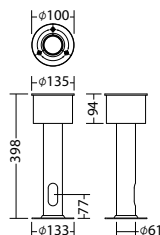
mounting adapter SN 6204.2 IP65, RAL 7015

Art. no. 100922840



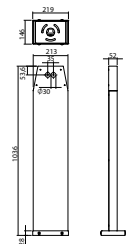
ground element bollard console

Art. no. 101080565



bollard console SN 6204 LED, RAL 7015

Art. no. 101441889



Name	Accessories	Art. no.
bollard console SN 6204 LED, RAL 7015	optional	101441889
ground element bollard console	optional	101080565
mounting adapter SN 6204.2 IP65, RAL 7015	optional	100922840