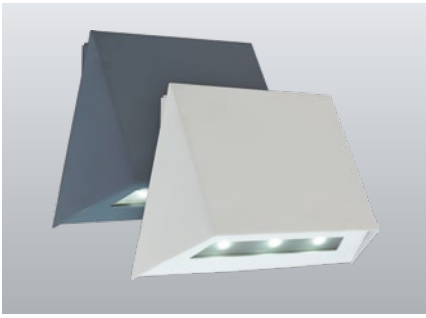


230V**SN 6204.2** Wall, floor and stair luminaires**NE/SV**

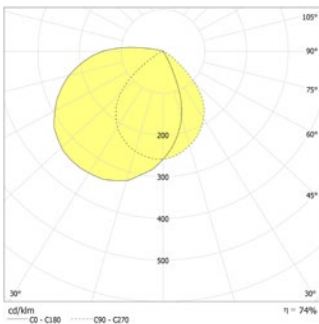
For connection to INOTEC-NEA-monitoring systems



Trapezoidal LED safety luminaire for illumination of escape routes and exit doors. Luminaire for wall mounting with high protection category and elegant housing made of powder coated stainless steel without visible screws.

Technical data

Material:	stainless steel powder-coated	Apparent power:	7,1 VA
Illuminant:	3 x 1W LED-module	Inrush current:	8 A / 50 µs
Luminous flux:	210 lm	Protection class:	I
Nominal voltage AC:	230V AC ±10% 50/60 Hz	Input terminals:	2.5mm ² feed through wiring
Nominal current AC:	31 mA	Temperature ta:	-15...+40 °C



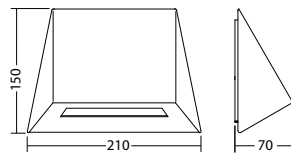
Wall mounting: Minimum illumination 1.0lx

Distance to middle of escape route [m]	Distance to middle of escape route					
	1.0m	2.0m	3.0m	4.0m	5.0m	6.0m
1.0	2.2	5.4	2.3	5.7	1.8	5.2
2.0	2.8	7.0	2.8	7.2	2.3	6.8
2.5	3.0	7.4	3.0	7.8	2.6	7.4
3.0	3.1	8.0	3.1	8.4	2.7	8.1
3.5	3.2	8.5	3.2	8.7	2.8	8.5
4.0	3.1	8.7	3.1	9.1	2.8	8.8
4.5	3.0	9.0	3.0	9.3	2.7	9.0
5.0	2.8	9.0	2.8	9.3	2.5	9.1
5.5	2.6	9.0	2.6	9.3	2.0	9.1
6.0	2.2	8.8	2.1	9.2	1.5	8.9

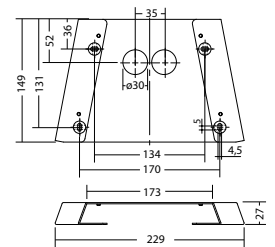
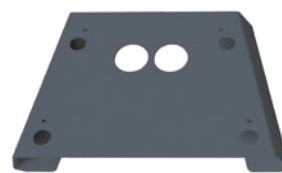
Articles**SN 6204.2 LED NE/SV**

Colors	RAL 7015	RAL 9016	RAL (special)
Art. no.	101282851	101282750	101283053

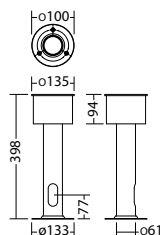
wall mounting Light colour: 6500 K Protection category: IP65

**mounting adapter SN 6204.2 IP65, RAL 7015**

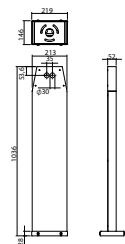
Art. no. 100922840

**ground element bollard console**

Art. no. 101080565

**bollard console SN 6204 LED, RAL 7015**

Art. no. 101441889



Name	Accessories	Art. no.
LM 122,5x21,5 3/6,5K KB90	Ersatzteil	101451791
NE - ET 9 / 24 SV -max.24VDC,320mAconst	Ersatzteil	101420570
bollard console SN 6204 LED, RAL 7015	optional	101441889
ground element bollard console	optional	101080565
mounting adapter SN 6204.2 IP65, RAL 7015	optional	100922840