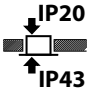
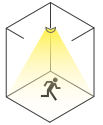




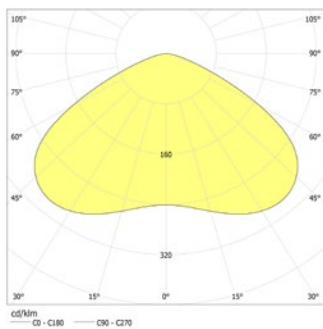
Discreet LED safety luminaire with optimised light distribution for the illumination of areas. Powder-coated aluminium cover with a diameter or edge length of no more than 45mm. Luminaire incl. driver for installation in ceiling cut-out of Ø 38mm. Attention: When using 230V supply units, these cannot be installed via the Ø 38mm ceiling cut-out.



Technical data

Illuminant:	1 x 3,5W LED-module
Luminous flux:	498 lm
Nominal voltage AC:	230V ±10% 50/60 Hz
Nominal voltage DC:	176 - 264 V
Nominal current AC:	26 mA
Nominal current DC:	26 mA

Apparent power:	6,0 VA
Effective power:	5,7 W
Inrush current:	6 A / 22 µs
Protection class:	II
Input terminals:	2.5mm ² feed through wiring
Temperature ta:	-15...+40 °C



Ceiling mounting: Minimum illumination 1.0lx (middle of escape route), Maintenance factor 0.8

Distance (m)	2.5m	5.4m	12.8m
2.5	5.4	12.8	
3.0	5.8	13.8	
4.0	6.3	15.5	
5.0	6.4	16.7	
6.0	6.2	17.7	
7.0	5.8	18.1	
8.0	4.7	17.9	
9.0	4.4	17.9	

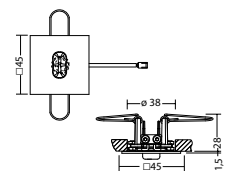
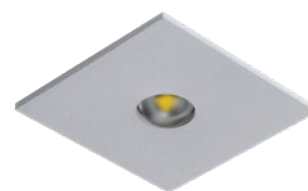
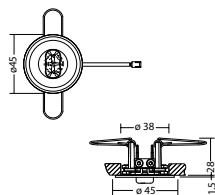
Minimum illumination 1.0lx (area illumination), Maintenance factor 0.8

Distance (m)	2.5m	3.3m	8.1m
2.5	3.3	8.1	
3.0	3.7	9.6	
4.0	4.3	11.0	
5.0	4.5	13.2	
6.0	4.5	14.6	
7.0	4.3	15.7	
8.0	3.9	16.5	
9.0	3.1	17.2	

Articles

SN 9024.1 -12 SHB FLD 230V			
Colors	RAL 9005	RAL 9016	RAL (special)
Art. no.	104826583	104826482	104826684
recessed ceiling mounting	Light colour: 4000 K	Protection category: IP20	

SN 9024.1 -12 SHB FLD 230V			
Colors	RAL 9005	RAL 9016	RAL (special)
Art. no.	104826886	104826785	104826987
recessed ceiling mounting	Light colour: 4000 K	Protection category: IP20	



FLD-Supply 230/320 SK II ext.	Art. no. 101445226
--------------------------------------	--------------------

Name	Accessories	Art. no.
FLD-Supply 230/4-CC-320 L ext.	required	102204856
ILD-Supply 24/4-CC-320 L ext.	required	104182444
LED-Supply 230-3 J-SV SK II ext.	required	101436536
LM 24x21 1(12V)/4K KB300 LED Modul	spare part	104828506

