

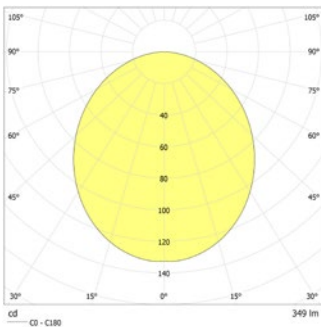


High-quality LED downlight, ideal for area or escape route illumination. Powder-coated aluminium housing without any visible screws designed for tool-less recessed ceiling installation in a ceiling cut-out Ø 68mm.

Technical data

Material:	aluminium powder-coated
Illuminant:	1 x 3,5W LED-module
Luminous flux:	349 lm
Nominal voltage AC:	230V ±10% 50/60 Hz
Nominal voltage DC:	176 - 264 V
Nominal current AC:	25 mA
Nominal current DC:	25 mA

Apparent power:	5,8 VA
Effective power:	5,5 W
Inrush current:	6 A / 22 µs
Protection class:	II
Input terminals:	2.5mm ² feed through wiring
Temperature ta:	-15...+40 °C



Ceiling mounting: Minimum illumination 1.0lx (middle of escape route), Maintenance factor 0.8

Beam diameter [m]	Beam diameter [m]	Beam diameter [m]
2.5	4.0	10.0
3.0	4.3	10.8
4.0	4.6	11.9
5.0	4.8	12.7
6.0	4.7	13.2
7.0	4.5	13.5
8.0	4.0	13.4
9.0	3.2	13.1
10.0	1.6	12.6

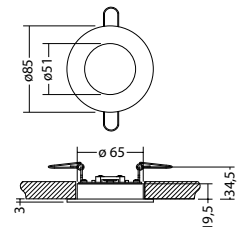
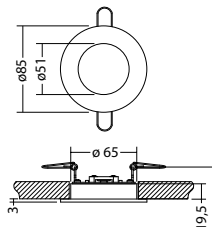
Minimum illumination 1.0lx (area illumination), Maintenance factor 0.8

Beam diameter [m]	Beam diameter [m]	Beam diameter [m]
2.5	2.8	8.5
3.0	3.0	9.2
4.0	3.3	10.2
5.0	3.5	11.0
6.0	3.6	11.6
7.0	3.6	11.4
8.0	3.4	11.3
9.0	3.2	11.2
10.0	3.0	10.5

Articles

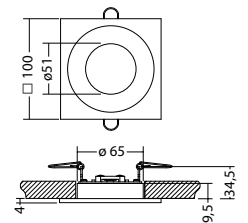
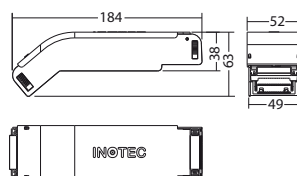
SN 9100.1 FLD 230V		
Colors	RAL 9016	RAL (special)
Art. no.	101318621	101318722
recessed ceiling mounting	Light colour: 3000 K	Protection category: IP20

SN 9100.1 FLD 230V		
Colors	RAL 9016	RAL (special)
Art. no.	101318823	101318924
recessed ceiling mounting	Light colour: 4000 K	Protection category: IP20



FLD-Supply 230/320 SK II ext. Art. no. 101445226

Accessories cover plate SN 9100.1 SQ Art. no. 100661344



Name	Accessories	Art. no.
Accessories cover plate SN 9100.1 SQ	optional	100661344
FLD-Supply 230/320 SK II ext.	required	101445226
LED-Supply 230-3 J-SV SK IIext.	required	101436536
LED-Supply 230-3 NE-SV SK IIext.	required	101436738
LED-Supply 230-3 SK II ext.	required	101436637
LED-Supply 24-3 SK III ext.	required	101442091