

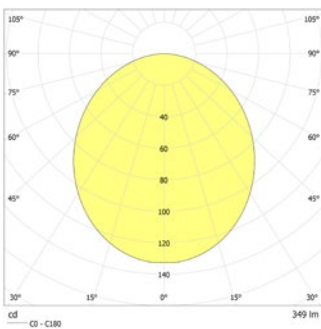


High-quality LED downlight, ideal for area or escape route illumination. Powder-coated aluminium housing without any visible screws designed for tool-less recessed ceiling installation in a ceiling cut-out Ø 68mm.

Technical data

Material:	aluminium powder-coated
Illuminant:	1 x 3,5W LED-module
Luminous flux:	349 lm
Nominal voltage DC:	24 V ±20 %

Nominal current DC:	185 mA
Protection class:	III
Input terminals:	2.5mm ² feed through wiring
Temperature ta:	-15...+40 °C



Ceiling mounting: Minimum illumination 1.0lx (middle of escape route), Maintenance factor 0.8

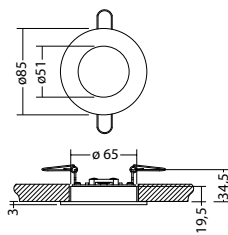
Beam angle [m]	2.5	4.0	10.0
2.5	4.0	10.8	13.5
3.0	4.3	10.8	13.4
4.0	4.6	11.9	13.2
5.0	4.8	12.7	13.1
6.0	4.7	13.2	12.6
7.0	4.5	13.5	
8.0	4.0	13.4	
9.0	3.2	13.1	
10.0	1.6	12.6	

Minimum illumination 1.0lx (area illumination), Maintenance factor 0.8

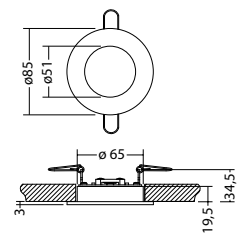
Beam angle [m]	2.5	2.8	8.5
2.5	3.0	9.2	11.6
3.0	3.0	10.2	11.4
4.0	3.3	11.0	11.3
5.0	3.5	11.6	11.2
6.0	3.6	11.4	10.5
7.0	3.6	11.3	
8.0	3.4	11.2	
9.0	3.2	11.2	
10.0	3.0	10.5	

Articles

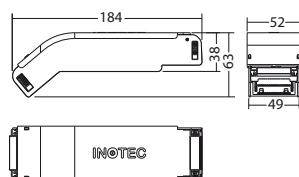
SN 9100.1 LED 24V		
Colors	RAL 9016	RAL (special)
Art. no.	101318621	101318722
recessed ceiling mounting	Light colour: 3000 K	Protection category: IP20



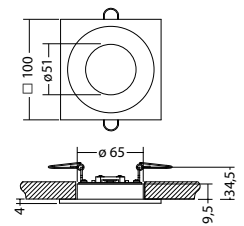
SN 9100.1 LED 24V		
Colors	RAL 9016	RAL (special)
Art. no.	101318823	101318924
recessed ceiling mounting	Light colour: 4000 K	Protection category: IP20



LED-Supply 24-3 SK III ext. Art. no. 101442091



Accessories cover plate SN 9100.1 SQ Art. no. 100661344



Name	Accessories	Art. no.
Accessories cover plate SN 9100.1 SQ	optional	100661344
FLD-Supply 230/320 SK II ext.	required	101445226
LED-Supply 230-3 J-SV SK IIext.	required	101436536
LED-Supply 230-3 NE-SV SK IIext.	required	101436738
LED-Supply 230-3 SK II ext.	required	101436637
LED-Supply 24-3 SK III ext.	required	101442091