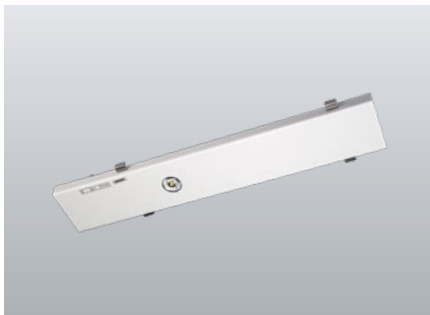
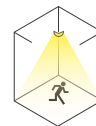


230V**SN LINE E-12 SHB Downlights****J/SV**

For connection to JOKER-central battery systems

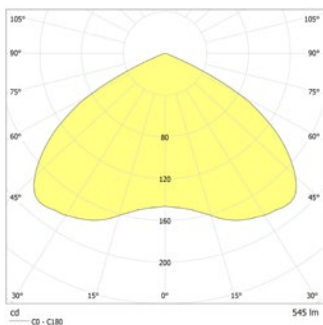


LED safety luminaire with optimised light distribution for the illumination of areas with high mounting heights. LED carrier for Trilux E-Line trunking system 7650...7LV + 5LV with stainless steel snap locks that can be applied tool-free. Automatic electrical connection by a plug-in contact with circuit selection. Incl. 4-chip LED illuminant for maximum safety.

**Technical data**

Material:	sheet steel painted
Illuminant:	1 x 3,5W LED-module
Luminous flux:	545 lm
Nominal voltage AC:	230V ±10% 50/60 Hz
Nominal voltage DC:	176 - 264 V
Nominal current AC:	33 mA
Nominal current DC:	25 mA

Apparent power:	7,6 VA
Effective power:	5,7 W
Inrush current:	6 A / 98 µs
Protection class:	I
Input terminals:	2.5mm ² feed through wiring
Temperature ta:	-15...+40 °C



Ceiling mounting: Minimum illumination 1.0lx (middle of escape route), Maintenance factor 0.8

[m]	[m]	[m]
6.0	6.9	17.5
6.5	7.0	18.1
7.0	7.1	18.6
7.5	7.1	19.0
8.0	6.9	19.3
8.5	6.7	19.6
9.0	6.3	19.8
9.5	5.8	20.0
10.0	5.2	20.1

Minimum illumination 1.0lx (area illumination), Maintenance factor 0.8

[m]	[m]	[m]
6.0	4.9	14.2
6.5	5.1	14.7
7.0	5.0	14.9
7.5	4.9	16.2
8.0	4.7	16.3
8.5	4.7	16.8
9.0	4.6	17.5
9.5	4.5	17.7
10.0	4.3	16.6

Articles

SN LINE E-12 SHB LED J/SV	
Colors	RAL 9016
Art. no.	101318318

Name	Accessories	Art. no.
J-ET 5.1 SV-max. 24V DC320mA const.	Ersatzteil	101422893

07650...7LV+5LV Trilux Light colour: 4000 K Protection category: IP20
E-Line

