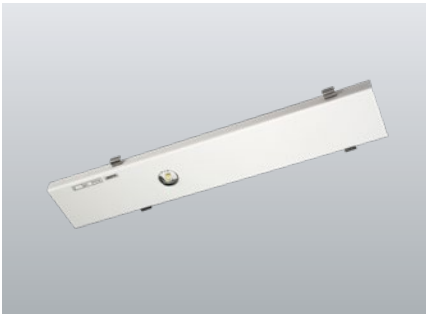


230V**SN LINE E-12 SLB Downlights**

For connection to FUSION central battery- or emergency power (NEA) systems

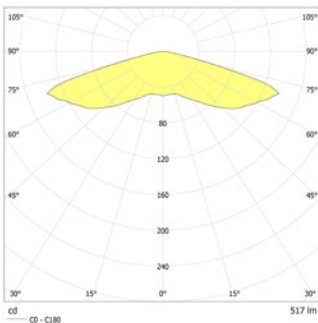


LED safety luminaire with optimised light distribution for the illumination of areas. LED carrier for Trilux E-Line trunking system 7650...7LV + 5LV with stainless steel snap locks that can be applied tool-free. Automatic electrical connection by a plug-in contact with circuit selection. Incl. 4-chip LED illuminant for maximum safety.

**Technical data**

Material:	sheet steel painted
Illuminant:	1 x 3,5W LED-module
Luminous flux:	517 lm
Nominal voltage AC:	230V ±10% 50/60 Hz
Nominal voltage DC:	176 - 264 V
Nominal current AC:	25 mA
Nominal current DC:	25 mA

Apparent power:	5,8 VA
Effective power:	5,5 W
Inrush current:	6 A / 34 µs
Protection class:	I
Input terminals:	2.5mm ² feed through wiring
Temperature ta:	-15...+40 °C



Ceiling mounting: Minimum illumination 1.0lx (middle of escape route), Maintenance factor 0.8

Distance [m]	2.5	5.9	15.2
2.5	5.9	15.2	16.3
3.0	5.9	16.3	16.7
3.5	5.9	16.7	16.9
4.0	5.8	16.9	16.8
4.5	5.6	16.8	16.7
5.0	5.0	16.7	16.4
5.5	3.8	16.4	16.2
6.0	1.4	16.2	

Minimum illumination 1.0lx (area illumination), Maintenance factor 0.8

Distance [m]	2.5	4.5	12.6
2.5	4.5	12.6	14.0
3.0	4.9	14.0	14.9
3.5	5.0	14.9	15.5
4.0	4.6	15.5	15.1
4.5	4.1	15.1	14.5
5.0	3.9	14.5	14.3
5.5	3.7	14.3	14.1
6.0	3.5	14.1	

Articles

SN LINE E - 12 SLB FLD 230V	
Colors	RAL 9016
Art. no.	101396726

Name	Accessories	Art. no.
FLD 230/4 - CC - 320 - L	Ersatzteil	101965083

07650...7LV+5LV Trilux Light colour: 4000 K Protection category: IP20
E-Line

